



# Tiptoe News

Spring 2022

The Quarterly Newsletter for the Tiptoe Community



## Queen's Platinum Jubilee Celebrations

As some of you will be aware, a Street Party was being planned for Middle Road residents only, to comply with regulations that were in place. I am pleased to say new guidance out to mark the Platinum Jubilee allows us to open this up to "neighbours". Therefore, we would like to invite neighbouring roads to join us on

**Sunday 5th June.**

We will be applying for a road closure of Middle Road from Wootton Road to Crabbswood Lane enabling us to have tables on the road.

A rough plan for the day is a "pot luck" lunch, when we pool our contributions, games for children, sharing of the Platinum Pudding/Cake, and a supper.

We will have a meeting to plan the day on Saturday 7th May, at 2pm on The Green. Please come along with your ideas. After the meeting a plan for the 5th June will be put up on various notice boards in the village.

We look forward to sharing this very special day as a community.

Thanks,

Sharon, Myrtle Cottage, Middle Road

## Editorial Notice

Whilst the editors make every effort to publish articles/reports as requested, we must reserve the right to adjust as necessary for suitable publication. 'Thank you', Pat and Cyril Rendell.



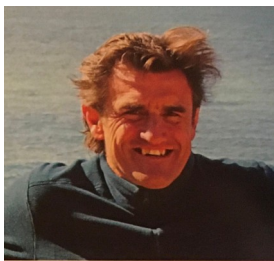
What's Inside?  
See page 2

## Sea Swimming feels like meditation

**Angus McChesnay, a teacher in Hampshire, finds focus when swimming in Milford on Sea.**

As a teacher I spent a large part of last year giving lessons on line. Without all the extra-curricular activities such as football coaching to get involved in I had more free time

I'm a keen swimmer and swam across the Channel in 2007. I trained at Hordle cliff near Milford on Sea, usually alone, but last year I found others there too - keen to get out of their houses! It was wonderful to make a connection with them.



In the water, you get a feeling of true isolation. Swimming is repetitive like rowing or running, but what sets it apart is secondary deprivation. Your head is in the water and you may not be able to see the bottom, so you enter a new layer of mindful, meditative activity.

When you enter the water it's an uncomfortable stinging sensation for a minute or two, and you need to control your breathing, a pleasant numbness sets in. On a sunny day, I can look up to the sun and almost trick myself into feeling warm! Afterwards, I pile on the layers and have a hot drink. It's a routine that takes me out of the every day.

I soon realised this was where I wanted to focus my life. I'd always wanted to have an outdoorsy job and, after 30 years of teaching, I felt ready to do something a bit different, while making the most of my skills. Now we've built up a community on the beach, and sometimes I'll train the other swimmers. I've set up my own Instagram account too, @iconic\_swims.

Life has opened up again and I'll be off finding other places to swim, but my heart will always be at Hordle cliff. It's a place I'll return to every day when I'm at home.

## Tiptoe Cross

The following suggestions were received from Tiptoe News readers after the last issue reported yet more accidents at this junction.

Traffic Lights. Stop Signs

Increase the visibility from Wootton Road.

Improve the drains to stop the flooding on the corner.

Width restriction on entry onto Wootton Road from B3055 and at the cattle grid on Tiptoe Road.

## Inside This Issue

Sea Swimming	2
Tiptoe Cross	2
Thank you, Round Table	3
Wildlife Project at St Andrews Church	4
The Velvet Rabbit	5
Motorists Banned	5
Passing Horses and Riders	5
Bees on The Green	6
Tiptoe Bombed!	6
Plea for Maypole Dancers	6
Jean Hampton	7
May Fayre Poster	9
The History of Middle Road (part 1)	10
New Forest Newbies	11
New Forest Heart Cops	12
Computer Savy Person Needed	12
Thank You, Oakhaven	13
Hello and Happy New Year!	13
New Forest Animal Deaths Study	14
Compost Corner	14
Time To Nest 2021 Review	15
Art Competition	16
Robin's Corner	16
Neighbourhood Watch	16
Brockenhurst Young Farmers	17
Hordle Parish Council	18
Fancy a Pitch at the May Fayre?	19
Tiptoe Green Work Party	19
It Will Be Alright	20
Breathing In Springtime	20
School Report	21
Small Actions - Big Impact	22
Sway WI Activity Programme 2022	22
Useful Contacts	23
What's On	24



## HAIRSWAY LADIES

Colours, Cuts, Keratin, Weddings

## BARBERS OF SWAY

Gents Walk in Service

Late Thursday nights from 6pm - Bud & Nibbles

LADIES - GENTS - CHILDREN

6 days a week - Early/Late appointments available

1 Station Road, Sway, SO416BA

TEL 01590 683666







## Thank you, Round Table.



As a village we should be thankful for the generosity of the members of New Milton Round Table for the loan of their sleigh on Christmas morning. It enabled Father Christmas, accompanied by his entourage, to travel comfortably around Tiptoe delivering presents to villagers. In the past he has walked Wootton Road, Tiptoe Road and Middle Road, but there is no way he would have managed the scattered seven properties he visited this year without Round Table's help. Nor would the Community Fund have benefitted through the donations of the Tiptoe households who called on his services.

Along with Pat as driver, Vanessa atop Skye (who was dressed in seasonal fancy dress,) and Simon leading the Christmas Morning procession to manage the traffic and various junctions, Santa made his steady journey down the narrow lanes. Also accompanying them was Stephen with his camera at the ready. Although starting in the dry, this year the deliveries finished in drizzle - however, later in the day the heavens opened and the roads were awash with torrential rain. Our happy band of joy-givers was pleased to miss that.

Not only did the aforementioned Tiptoe property inhabitants benefit. Other vehicles' occupiers could be seen grinning, waving to Santa, and calling out "Merry Christmas" as they passed by. Horse owners seeing to their charges in the fields and people in their gardens or spotting the procession from upstairs windows also waved and shouted greetings. Spirits were lifted and compliments of the season exchanged with cyclists and dog-walkers alike as they took advantage of slightly quieter roads.

Here are a few of the Tiptovians who met with Father Christmas on this trip. Many thanks to those families who provided the additional photographs. RM



## NEW FOREST PC

PC & Mac Software and Hardware

### IS YOUR COMPUTER BEHAVING BADLY?

Many issues can be solved quickly and cheaply with one callout.

We are a local company based in Everton, Lymington.



## Wootton & Bashley Social Club

### Your local club

Come and join your local social and enjoy a friendly atmosphere.

The club frequently holds events such as bingo, skittles, and live music.

Facilities includes snooker and a reasonably priced bar.

The hall may be hired out for social events.

Telephone 01425 610013 or call in one evening!

(Joining fee only £10, annual subscription £10)

Wootton and Bashley Social Club, Tiptoe Road, Wootton, New Milton, Hants BH25 5SJ





## News about a Wildlife and Wildflower Project at St Andrew's Church, Tiptoe

Through Pat Rendell, Conservation Connection New Forest South now has close links with St. Andrew's Church, Tiptoe.

At the kind invitation of Anthea Fisher and Duncan Argyle, we met on-site in early February to talk about enhancing the small area of grassland in the north-east corner of the churchyard for greater wildlife benefit. The grassland already contains a variety of wild flowers and grasses, but we won't know until the spring either the composition or their full extent.

What we do know is that the Church is keen, and open to suggestion, to create an easily maintained habitat which gives the local wildlife somewhere to shelter, feed and breed, and worshipers a wildlife spectacle in miniature. For the time being though, I'll be looking to see what wildlife is currently present on-site, and then proposing a "plan of action" with a view to beginning the process of subtle change later in the year.

I'll keep you posted!

Bob Lord - Chairman, Friends of Ballard Water Meadow

~~~

When attending St Andrew's Church during weekend visits to my mother in the spring/summer, I remember so well the magnificent sight of a field full of poppies, oxide daisies, grasses, orchids, and many other wildflowers I didn't recognise. But that was several years ago now. More recently, the area has become overgrown and the wildflowers neither nurtured nor seen.

So.....imagine our delight, when introduced to Mr Bob Lord, a wildlife and wildflower specialist and conservationist with years of experience and expertise, offering to advise and help us cultivate a wildflower meadow in ways that will encourage all kinds of wildlife! Wonderful! We are so grateful to Bob.

We realise not much is going to show overnight and it may not look very pretty for at least a year or two, but knowing the right things are being done to revive the plants already in the ground, and to introduce new ones, gives us joy and great hope for all that is yet to be. We look forward to showing off some of the glorious things God has made!

Anthea Fisher - Member of St Andrew's



## Sway Village Hall

Available between 9.00am to 11.00pm, including weekends  
*One off and regular booking available. Free Wi-Fi.*



**Large Main Hall - £12.50 per hour**

**Stage** - when used in conjunction with Main Hall  
**£5.00** - per hire period

**Contact Letting Secretary**  
Email:- [Bookings.svhall@gmail.com](mailto:Bookings.svhall@gmail.com)  
[www.swayvillagehall.co.uk](http://www.swayvillagehall.co.uk)

**Kitchen** - Free use for tea & coffee Equipped for larger catering events

Meetings / Wedding Receptions / Adult & Children Parties / Family Celebrations / Presentation  
Public Events / Seminars / Workshops. - Baby Changing Facility - Disabled Access Toilets



## The Rising Sun

**New Forest family friendly pub**  
**Meals served all day everyday from noon**  
**Extensive adult and children menu**  
**Large garden and outside sitting area**  
**Pop in and join our loyalty discount club**  
**Adventure playground & Dogs welcome!**  
**Tel: 01425 610360**





## THE VELVET RABBIT

"How can I become real?" the little velvet rabbit asked the old rocking horse.

"It's something that happens to you when someone loves you for a long time. Really loves you".

"Does it hurt?"

"Sometimes" answered the rocking horse, "but when you are real you don't mind being hurt.

"It doesn't happen all at once, you slowly become real. It takes a long time, and it does not often happen to people who break easily, or have sharp edges.

"By the time you are real your velvet will be worn out and loved off, and you will look really shabby, but these things don't matter at all because once you are real you can't be ugly... except to people who don't know how to love."

## My Dog

My dog went on the Underground to learn the trumpet. He got from Barking to Tooting in under an hour.



**Tiptoe Community Group  
Coffee Morning**

**Wootton Social Club**

**Every Wednesday 10.30 to 11.30**

## All motorists banned from parking on pavements

Councils in England and Wales could have the power to issue fines for motorists that park on the pavement.

The new rules could mean that councils UK wide could issue £70 fines for pavement parkers.

It's already illegal to park on the pavement in London and some other parts of the UK. Scotland's ban on pavement parking should come into effect from 2023.

The government is still consulting on the pavement parking ban, but reports say that the decision in England and Wales could be made sometime this year.

## Passing Horses and Riders

From the 29th January it is a requirement for all vehicles to pass horse riders at a speed under 10MPH and allow AT LEAST "2 METRES SPACE".



Let's make our villages safe for all road users



## Loaders Garage Ltd

St Johns Road, Bashley

New Milton, Hants, BH25 5SA

01425 614722

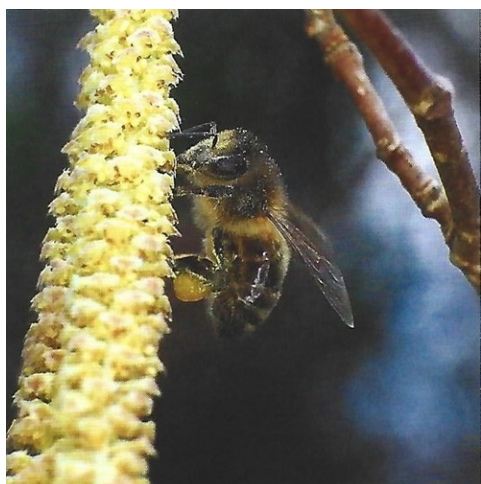
**All your vehicle needs: Fuel, MOT, Servicing  
and Repairs**

## Hordle Voluntary Care Group

Covering the Villages of Tiptoe, Hordle and Everton. Can you help? We urgently need more drivers. Please help us by calling 0845 388 9063 or Email [hordle.care@btinternet.com](mailto:hordle.care@btinternet.com) for further information. To book transport please call 0845 338 9063

## Bees on The Green - Spring 2022

Spring has arrived heralded by the presence of spring flowers providing a much-needed source of nectar and pollen for our developing colonies. This is the time when we can begin to gauge the effect of our winter preparation. Strong overwintered colonies with plenty of stores and low varroa will now be taking to the wing, undertaking general house keeping duties and collecting water to dilute stored honey. The Queen will begin to lay in earnest. Eggs laid now will see new bees emerging at the beginning of April. By checking the debris on the removable floor, we can gauge the activity within the hive without having to open it and disrupt the colony. Careful monitoring of supplies within the hive is key to avoiding the risk of starvation which can so easily be brought about at this time of year as a result of a cold snap in March. The bees are consuming more stores in order to raise the brood temperature from 20°C to 30°C to stimulate and support the queen in her egg laying.



As mentioned, bees will be out gathering pollen. We can observe both bumble and honey bees attending flowers, their pollen sacks full and their bodies covered in pollen particles.

**A study in 2013** identified the capacity of bumblebees to detect weak static electric fields which is known as “electroreception”. Bees are natural carriers of a positive charge, which is essential for aerial electroreception. Bees experience an attractive electrostatic interaction with plants as they approach the flower head and the opposing surface charge facilitates the transfer of negatively charged pollen grains onto the bee.

Bees exhibit learned preferences for highly rewarding flowers. Visiting bees can transfer some of their charge to the flowers as they forage, initiating a temporary positive charge in the electrical signature of the flower. Such an immediate and rapid change in floral electrical cues could provide other foragers with important information about the availability of nectar and pollen. Bees live in a complex electrical landscape that has the potential to convey a vast array of sensory information.

Fake honey imports and honey fraud are in the news again, the global trade in honey is big business, Britain regularly imports £80 -100 million of honey each year - much of it from China. With supermarket own brand honey retailing for as low as £1 a jar less than the cost of production, it is suspected of being a blend of inverted rice sugar or corn syrup blended with some honey. Unfortunately there is no single agreed test that can identify all fake honey, however, if it is cheap ask yourself “Is it really honey?”. Nick Jazwinski

## Tiptoe has been “Yarn Bombed”



In the afternoon of Thursday 17th of February, I took a birthday card to the post box outside the former Post Office in Tiptoe to ensure it went First Class (‘cos otherwise it would arrive late!) to find a crocheted, creamy flowered tulip in a crocheted flowerpot fixed to the top of the bright red box. I was amazed! From where did it come? Not blown there on Eunice’s wind clearly, because it was still there at Friday lunchtime when I passed with my camera. As you can see, the box was not emptied ‘cos the “FRI” plate is still in evidence. That was due to Eunice. Collection was suspended due to the high winds, so delivery will be late. No matter. Without the card I couldn’t have marvelled at the skill of the craftsperson. RM



## Maypole Dancing for the May Fayre

We are looking for any children – girls and boys – who may be interested in learning to dance around the Maypole. In previous years we have always raised a team from Brownies, Rainbows and school. Do you have any children or grandchildren who would like to learn? Lessons will be arranged after school from the end of March at the Young Farmers Hall, Wootton Road, Tiptoe.

Further details from Pat Rendell on 01590 682741 or [patrend46@btinternet.com](mailto:patrend46@btinternet.com)



## Jean Hampton – A journey from South London to Tiptoe and nearly a century of life.



Jean was born in South London on 22nd September 1923, although at the time it was still in Surrey rather than Greater London. This was something about which Mum was adamant through her life and although Mitcham was eventually swallowed up by London, Mum always had that sense that the countryside was where she really belonged. In fact the road she was born in and lived in until she got married, was called Lavender Avenue, a nod to Mitcham's rural lavender-growing past...and there is even a picture of Mum dressed as a Lavender girl aged around 8 or 9.

Growing up between the wars was not always easy and there was no hot running water in the house which was lit by gas. In fact, even into the 60s her parents' house had hot water only if the fire was lit to heat the back boiler. These were the days before the NHS or sickness and welfare benefits and so, when her Dad was badly injured in the head at work, no money came into the house unless her Mum did errands or made a little doing sewing. One of the 'errands' was collecting money for the local bookmaker... at a time when gambling was still illegal. Mum had an older brother and would have had twin sisters if they had survived a difficult birth. While she was in

her last year at school in 1937, she was lucky enough for the school to fund most of the cost of a trip to Germany and she remembered how friendly everyone was, but she also remembered the Hitler Youth, which she thought of at the time as just like the boy scouts!

At the age of 14 Mum needed to go out to work and became a girl office apprentice with the Post Office in Holborn in the City. It was there that she met one of her lifetime friends, Eileen, and they talked almost every week until Eileen died at the age of 95. They used to laugh so much in their later years as both had become a bit deaf and the misunderstandings led to confusions on a grand scale.

When war broke out in 1939, Mum was just about to turn 16. She continued to go up to London to work by day and then volunteered as an Auxiliary Nurse at St Bartholomew's in the evenings. Many of her shifts there were spent during the blitz helping in the underground stations which at the time were used as bomb shelters. She often talked about having to find different ways home as trains or buses were disrupted due to bombs. One incident became quite famous as she was on the bus behind one which went into a big bomb crater after a direct hit on Balham Tube Station.

Another wartime incident she recalled was when a warden shouted at them to 'put that light out' only for them to discover that it was not a light, but a fire started by an incendiary bomb landing on a bed upstairs. They managed to heave bomb and bed out of the window. Not all incidents were as easily dealt with, and she remembered coming out of the bomb shelter one night to find all the windows blown out and the entire front door at the other end of the passage. A doodle bug had landed opposite and had flattened a complete row of house with several friends and neighbours dead.

Her brother, Peter, joined up at the start of the war and was sent out to the Middle East as RAF ground crew. In a letter which we found after Mum died, she expressed her real regret that she did not get to spend more time with him when they were in their teens and early 20s. This lost part of her relationship with her brother was no doubt repeated thousands of times across the country. But in a strange coincidence, Peter bumped into a school friend of his in a bar in what was then called Palestine. This friend, Frank, was about to leave the Middle East to come home after 4 years away, in readiness for the Royal Engineers' operations for D-Day. Once home, he called round to Mum's house to let them know that he had seen Peter and that he was OK. Mum always used to say that at the time she had no interest in men and thought little more about him. Instead, she put her energies into her new interest in the Catholic Church, to which she was introduced by her friend Kathleen.

After the war, Frank (who had clearly been thinking about Jean) called round to see her but Mum was out. Mum's story was always that she was still not really interested and was always a bit hazy about why she eventually married 'old Frank Hampton' as she called him. After Mum died, we found a letter addressed to Dad which she had written a year after he died, at the suggestion of the bereavement charity Cruse. In it she revealed an altogether much more romantic side to her character, and that after he had called round that first time, she found herself thinking more and more about him and that she felt that she would quite like to see him again.

They married in 1947 and spent the first few years living with Dad's Mum until they managed to find a deposit for a small leasehold flat. During those early years, they worked hard to get Dad's best Man, Lionel, and Mum's friend and bridesmaid Kathleen together. Dad had spent all of his 4 years in the Middle East with Lionel and, when they eventually married, the couples remained close friends for the rest of their lives. 'Aunty' Kathleen became my godmother and she is now the sole survivor of that group of friends who grew up between the wars in South London.

The love of the outdoors, coupled with the need to supplement the rations which were still in place until I was born in 1953, meant that Mum and Dad threw themselves into gardening and an allotment and developed a love of all things rural which eventually took them to Tiptoe many years later and another allotment in Sway.

Pregnant women were able to get an extra milk ration, which meant that the milkman was often the first to know of an imminent arrival in the street. When their first (and only) child 'decided to make an appearance' as Mum would say, that meant an end to Mum's employment in the civil service. Money became very tight, but Mum threw herself into looking after me and Dad, and that love and determination never diminished until the very day she passed away. Life for many women in the fifties meant that a career was not always an option, and they focussed their energies on home and family. It became very easy for their children (the baby boomers) to see them as 'just housewives' but the reality was that for many they simply didn't have the opportunities that their children had....and there can be no doubt at all that their husbands and children benefitted hugely from that single-minded focus.



In her later years, Mum would often talk about those days...a time when there was a choice of two different milk deliveries on electric milk carts, when the coal was delivered in sacks off the back of a lorry, when the 'Corona' man delivered pop each week and the rag and bone man and the baker both had horse and cart. Mum, like many of her generation and especially when money was tight, would use the old war-time axiom of 'make do and mend'. Socks were darned, sheets were 'middled' and homemade clothes were the norm. She was adept at making the most of food, with joints lasting 3 days in various guises and the cheaper cuts of meat used for homemade mince or stews. Mum would also be the mainstay of digging and gardening, and I can remember her mixing concrete by hand when they built a new coal bunker.

Many people who knew Jean (my Mum) would say that she was always 'on the go', never standing still or just relaxing. One day when I was around 3, a lady down our street asked if I could walk properly as she only ever saw me trotting along by Mum's side as she strode off to town or to Church.

The countryside or seaside was always Mum and Dad's go-to day out. On the train before they had a car, and then in their old Ford Prefect. These days were big events with camping stove, flask, and blankets all being packed for a trip of 54 miles to Brighton, or if very adventurous, to Bexhill. Their dream was always a little cottage in the country, but it was unreachable on Dad's wages as a fitter and turner.



It wasn't until the late sixties that their finances began to turn around. Dad had left a job after a disagreement with his manager, and they decided on a bit of an impulse to buy a small lock-up DIY shop. Mum went back to work to help pay off the loan and they worked all hours to provide a service to customers, even if it meant that Mum would be delivering anything from a half pint of paint to 8 x 4 sheets of plywood or chipboard after she finished at the tax office. It was in Dad's first week in the shop that Brian, a rep for a local supplier also came in. It was his first week on the job and they both admitted that neither was sure what they were supposed to do. They sat and had a cup of tea in the back room and remained firm friends ever since.

Gradually they were able to buy a new car and a van for the shop (Streatham Wallpapers). A chance conversation with the couple who owned the tobacconist two doors down took them to the New Forest with the idea of buying a small retirement bungalow.

In 1977 they took possession of Glenealy in Middle Road, Tiptoe for the grand sum of £5000, and would spend the next 3 years shutting the shop on Saturday evening at 6 and then driving down to Tiptoe. Sunday was spent renovating the inside and doing the garden, before they got up early on Monday morning for the trip back to London to open the shop and for Mum to go into work. The bungalow was one of three in a line and 'old Charlie' had lived in Glenealy for many years. The bath was an old fashioned hip bath filled from the sink, the garage had fallen down, and the kitchen was just a table with a freestanding and very old gas stove. Gradually Mum and Dad built their own kitchen units to fit the uniquely odd dimensions, had installed a proper bathroom with shower, had rebuilt the garage and added a porch and the garden was awash with flowers and vegetables including a little greenhouse.

By 1980, the big new DIY stores were beginning to encroach into South London and Mum and Dad decided to sell up and realise their dream of life in the country. Sadly, the market at the time was not great and by the time they finally moved, they needed to find work locally before their state pension kicked in. They started by cleaning for people in the village and in Sway, but gradually people started asking Dad to do odd jobs as well. The move also meant that they had a little more time on their hands. They got a dog which both of them had yearned for but had felt that London was just not suitable. They also took on an allotment near the Hare and Hounds and worked that right up until Dad died. They even bought themselves a load of pig manure as a wedding anniversary present one year, so who said that romance was dead?

Mum would throw herself into everything, but sailing, which Dad and I enjoyed, was definitely not her thing. However, that did not stop her from sewing sail covers and cushions and making sure that 'her men' were properly provisioned. I eventually moved to the New Forest as well, and Mum was there doing morning and evening feeds for the horses, as well as walking the dogs.



Friends from London were regular visitors and Brian (the rep) and his wife Ann also decided to make the move away from 'the smoke' on a permanent basis. The same happened with another shopkeeper close by and soon Mum and Dad had four of their old friends near them in the Forest, together with new friends they made.

During this time, the two bungalows either side of Glenealy were also sold following the deaths of their very elderly and frail owners and so another chapter in the life of the forest came almost to an end as they were modernised and extended. Mum and Dad were amazingly lucky with their new neighbours, and they remained firm friends even when they moved away. Bella, Robert, Greta and Alan, Howard and Bev and then more recently Sue 'from over the back' and Barbara and Michael have all been not just good friends, but have been part of the support which enabled Mum to stay in her own home for the vast majority of her life.

In 1997 they celebrated their Golden Wedding Anniversary.... with all the playfulness and love they shared in their lives together.

*This fascinating story of Jean's life, as told by her son James, will be continued in the Summer Edition of "Tiptoe News"*





# Tiptoe



Free  
Entry

# May Fayre

Free  
Parking

## Saturday 14th May 2022

12.00 noon to 4.00pm

~ SO41 6FT ~

## Helping to fund Tiptoe Green

Registered Charity Number - 1135329

Beer Tent - Teas and Coffees - BBQ

Cakes and Produce - Ice Creams - Crafts

Traditional Games - Stalls - Punch & Judy

Vintage Vehicles - Bee Keeping - Guide Dogs

## Dog Show - Raffle Prize Draw

(Including £50, £25, bottles of wine and more)

## Maypole Dancing - Tombola

## Live Music

For further details contact Pat on 01590 682741

[patrend46@btinternet.com](mailto:patrend46@btinternet.com)

[cyrilrend41@btinternet.com](mailto:cyrilrend41@btinternet.com)



## **"The History of Middle Road" by Jon Linin (Part One)**

The story starts with a stroke of luck in a local charity shop; I found a reprint of the first series Ordnance Survey map for our area. Although not published until the 1890s it was actually surveyed between 1797 and 1810 as part of a military survey of the south coast, allowing us to glimpse Tiptoe over two centuries ago.

What is clear is that there is no Middle Road, nor does Wootton Road exist, in fact there is no sign of Tiptoe as we know it.

The road layout is very different. Here I have drawn the old road network onto a more modern map. Boundway and Mead End Road are recognisable, to the south a road ran from near Tiptoe Cross across to Crabb's Copse and then on to Lower Mead End Road. To the west ran a road that must have been of some substance and antiquity as it marked the parish boundary between Hordle and Boldre (and the line of the road still marks the parish boundary between Hordle and Sway).

At the time of the military survey the land bounded by these four roads would have looked identical to the land north of Boundway today; open heath with a valley, a mix of grass, heather, gorse, willow and birch; grazed by ponies, cattle and probably sheep.

The key event took place in 1820 when 637 acres of Arnewood Common, Tiptoe and Sway were enclosed for agricultural use by Parliamentary Act.

To facilitate use of the land two brand new, straight roads were built, Crabb's Lane was extended north to Marley Mount, and another road crossed it at right angles from east to west, Middle Road.

At first it only ran to the "parish boundary" road. Only in 1827 when the enclosure of the common as far as Wootton Hall was completed and the new Wootton/Tiptoe Road built replacing the old road, that Middle Road as we know it was completed. The new Wootton Road also led to the truncation of Boundway which had previously run down to the Rising Sun.

So Middle Road dates to around 1820 and its oldest building probably dates from near that time. Little Cottage in Fairlight Lane was a type of dwelling that was common throughout much of the Forest, built of cob (clay bound with horse hair, and horse droppings), limewashed, roofed with locally source timber and thatched with ling heather. Most cottages would have been single storied with beaten earth floors.

*(To be continued in the Summer Edition of "Tiptoe News")*



### **Dance with Miss Jennifer**

Creative ballet & tap classes for children held at Sway Village Hall. First class is free!

#### **Wednesday:**

4.00-4.45pm Preparatory ballet & tap (4-6yrs)

#### **Thursday:**

10.00-10.35am Toddler & Me ballet (18mths-2.5yrs)

10.40-11.20am Pre-school ballet (2.5-4yrs)

11.25-11.40am Pre-school tap (2.5-4yrs)

[www.facebook.com/DanceWithMissJennifer](https://www.facebook.com/DanceWithMissJennifer)  
[jennifer.ashley@outlook.com](mailto:jennifer.ashley@outlook.com) / 07720 641716



## Tiptoe Newbies

It was really Simon's idea.

He said "Let's move out of London, more space, fresh air, less traffic and people", and this was well before the dreaded "C" word (COVID) of the past almost two years.

"Hmmm, where"?

"The New Forest"...as an American, and even though I have lived in the UK for twenty plus years, I still think it is rather quaint, cute that Brits can call something "New" when it was established way back when, more than one thousand years ago, in 1079.

"But what about our friends, theatre, opera, restaurants, festivals?"

He said "We'll be fine, we can make new friends, mountain bike straight from our home, close to the sea for sailing, boating and your kite surfing, have space to garden, plus you love the countryside and wildlife!"

So after a lot of looking here, there, and everywhere for 18 months, we finally found our small holding in the forest in Tiptoe! (and yes, we do tend to break into that song – Tiptoe through the Tulips – in a high-pitched voice when we tell people where we have moved).

It's now been a bit more than two years...and...was it what we were expecting? Hmmm...

In London, when I plant my rose bushes, they are out in the garden in their full glory. In Tiptoe, after finally having the time to plant my beautiful full rose bushes that had been sitting in their pots in planting position for three weeks, and after six hours of back-breaking, preparing the soil, building mounds as the water table is so high, setting them just so on a Sunday evening, you guessed it! The next morning when I opened the curtains, there were no roses, no buds, no leaves, nothing! except for one rose. To add insult to injury the deer came around the next day, ate the last rose, saw me, and jumped over the 6 feet high hedge. Needless to say, the roses are now fully ensconced in a protective cage.

In London, I feed the birds and of course the squirrels and, unfortunately, the rats, where I call out pest control. In Tiptoe, I feed the birds and, unfortunately, the rats, but then as I sit in the sun room working away, down swoops a buzzard, pins the rat to the ground, turns his beady eyes to me and says "this one is mine" before flying off clutching the rat in his talons. Wow! Live Nature Channel three feet outside my window!

In London, I balance high up on a ladder, generally in not appropriate footwear and certainly not with three points of contact, trimming our hedge on a busy street as people just walk around completely oblivious to me. In Tiptoe, as I am picking brambles I look down and there is our neighbour's son carrying a ladder miles longer than he is, telling me that his dad's ladder is safer plus I can get even higher where the berries are better. In London, we flush the loo and away it goes never to be seen again. In Tiptoe, one must dig a monstrous hole, pump out the swimming pool that it becomes from the ground water, plonk down your very own sewage treatment plant and surround it with 10 cubic metres of concrete so it doesn't float. Either that or "enjoy" the rich aroma from the old septic tanks, draining to the same ditch, if they haven't backed up and flooded the garden from the heavy rain.

In London, if we get into an accident, we call the AA. In Tiptoe, when Simon drove his van into that deep ditch lining Vaggs Lane, the AA said "call your insurance company" and the friendly farmer said "no way can I pull that out with my tractor". Six hours later the tow truck came with a winch and was finally able to lift the van out. Interestingly, a very short while after the ditch incident, all sorts of indicative white lines were painted all the way down Vaggs Lane!

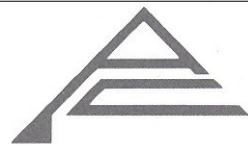
In London, we enjoy our evening walk strolling back from the tube station on a night out. In Tiptoe, on pitch black or moonlit nights we stroll down the road, me in my red and Simon in his bright white onesie; one neighbour calls him the snowman. So please, if you see us we are harmless if not a bit silly.

So I will leave you with my last thought on our moving to the country and what I expected.

In London, if I want to rejuvenate the garden, I buy bags of compost, etc. at the garden centre. In Tiptoe, I scour the lanes, hoping the neighbours haven't gotten to the bags of manure first. Alas, the package the horse and rider leave every Sunday morning directly outside our gate isn't quite enough. Luckily a kind neighbour said she has a large pile of the stuff, so come and help myself. So now when I tell Simon I am going to shovel sh#t, I mean it literally and not figuratively.

Both Simon and I are very glad to have moved to Tiptoe, and the warm welcome we have received. Thanks for reading!

Suzette



## ADDSPACE

MANUFACTURERS - SUPLIERS & INSTALLERS OF  
UPV WINDOWS - DOORS & CONSERVATORIES

**RICHARD HANDYSIDE**

Wootton Road, Tiptoe, Lymington, Hants, SO41 6FT

Tel: ((01590) 683506 Fax: 01590) 682556

[www.addspaceconstuction.co.uk](http://www.addspaceconstuction.co.uk)

Local company - established 29 years



## New Forest Heart Cops

This is why the Police and Forestry England ask you NOT to park in front of the emergency gates that lead onto the New Forest.

This morning we've had to go through the gate opposite Shatterford Car Park and drive for over a mile to rescue a walker with a suspected broken ankle.

We will be taking positive action if you choose to park in front of the emergency gates, including removing offending vehicles at the owners expense.

Please keep the gateways clear. Thank you. #14495



### **Donations needed for Tombola at the May Fayre**

Alcoholic and non alcoholic bottles,  
Tin of biscuits,  
Box of chocolates,  
Shower gel or bubble bath etc.

If you are able to donate something  
please let me have it by  
7<sup>th</sup> May.

Thank you,

Sharon, Myrtle Cottage, Middle Road.

### **Are you good with a computer?**

It is with sadness that we have to say Cyril is no longer well enough to continue with the setting up of the Tiptoe News. He has been doing this task since the edition of Spring 2010 when we took it over (12 years ago). I will continue to collect items for publishing and Sue and Robin Moger will continue to 'proof' read.

If you are interested please talk to us about it. There is a template for the magazine which is currently being operated on 'Microsoft Publisher'.

Thank you - Pat Rendell - Joint Editor

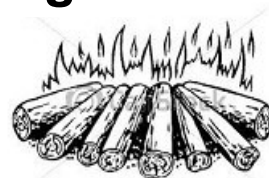
Telephone 01590 682741

[patrend46@btinternet.com](mailto:patrend46@btinternet.com)

## Quality Seasoned Hardwood Logs



Free delivery  
Contact Colin Moore  
07966 211205  
[colinmoore2014@outlook.com](mailto:colinmoore2014@outlook.com)





## **"Thank you Oakhaven staff & volunteers, you are simply the best."**

For Mark, who is a regular day hospice attendee, Oakhaven Hospice has been a real haven to him: "It's never a dull place and all the staff and volunteers are truly dedicated and professional, they also genuinely care about you. Without the ongoing support of Oakhaven, life for me would be very dull indeed. I am lucky to have them as part of my life and I am eternally grateful for everything they've done for me."

We are able to care for 1 in 4 people like Mark thanks to gifts left in Wills. Leaving a lasting legacy to Oakhaven in this way ensures we will be able to continue caring for those in our community when they need us most, helping us to make every moment matter.

Could you help us with a gift in your Will? A pledge of any size really will make a difference to our future. Visit [www.oakhavenhospice.co.uk/legacy](http://www.oakhavenhospice.co.uk/legacy) for more information. We also offer a free and confidential online Will writing service in partnership with Guardian Angel.

As a friend of Mark's from Oakhaven once said to him 'I didn't come to Oakhaven to die, I came here to live.'



## **Hello and a Happy New Year to you all!**



What a wonderful Christmas and New Year break I had. Thanks to horses you never get all the holidays off but, in exchange for working Christmas week, I got a week off over the New Year.

A friend of mine lives in Auckland so I spent a few days up there with them, beautiful beach walks, hikes to waterfalls and, of course, the obligatory all night party in Auckland central on New Year's Eve!

After a gorgeous few days in the big city, it was down to Rotorua for another few days. Back to the old farm for a catch up with Bella the foal, who is not so small anymore, Roxy the dog and many regulars back for horse rides. It was like I never left (as it always is!) and, with a team of new staff for the summer, I was thrown back in the deep end of training and being the unofficial boss.

Three days later I was back to the real world and work became incredibly busy. Since the Christmas break we have been photographing, videoing, endlessly washing and parading the yearlings as we get closer and closer to the sales! Not quite as easy as with the older horses back in November, but they are getting better and are on track to be perfect by the sales. Until next time :) Charlotte.

## **Arbor Venture Tree Care** - all aspects of tree work undertaken

- Friendly & professional
- Insured, qualified & experienced

**Josephine Hedger**

2008 & 2010 WORLD TREE CLIMBING CHAMPION



**Checkatrade.com**  
Where reputation matters

**01590 683540**  
**enquiries@arborventure.co.uk**  
**arborventuretreecare.co.uk**

## **New Forest animal deaths: Study begins into average speed cameras**

A study into using average speed cameras to help reduce animal deaths in the New Forest is set to begin.

More than 60,000 people signed a petition calling for cameras to be installed in the national park.

Hampshire County Council said it would look into the technical, legal and environmental issues of installing cameras on the B3078 Roger Penny Way. An opposition councillor warned "big reservations" remained about the costs and viability.

New Forest commoners have led calls for average speed cameras following a series of high-profile accidents on the road.

Edward Heron, leader of New Forest District Council said it was "making progress" on introducing a number plate recognition system along with the county council, police and forest organisations. "We all recognise this is a high priority, but it is an unfortunate reality of work of this nature that the sticking point has been money. There is now the clear commitment to fund this project and the full support of partners to take forward this important work."

New Forest Campaigners have called for tougher measures to prevent animal road deaths in the New Forest. The feasibility study is set to cost between £30,000 and £50,000. Data published by the National Park Authority shows overall animal road deaths are at a 30-year low, despite more animals grazing in the forest. David Harrison, who sits on both New Forest District Council and Hampshire County Council, said "Money would be better spent on speed enforcement throughout the forest. Everyone wants to see collisions with animals reduced in the New Forest - not just on this one road. There still remain big reservations about whether it is even possible to fit average speed cameras in the highly sensitive habitat of the New Forest" he added.

Prior to 2021, Hampshire Constabulary said there was "no policing justification" or funding available for a number plate recognition system. However, Police and Crime Commissioner Donna Jones said she had since "listened and acted" over supporting the feasibility study.

The New Forest is one of the largest remaining areas of unenclosed land where commoners' cattle, ponies and donkeys roam throughout the open heath.

### **COMPOST CORNER - SPRING 2022**

Some people have been saying we have had a 'false winter' and others a 'false spring'. Whatever it is, our climate is changing fast and the way we grow our crops and flowers is changing. More and more people are giving over their gardens to growing vegetables due to the higher prices in the shops and I certainly don't blame them as fresh home grown food definitely tastes best.

Whatever you decide, the growing seasons are changing and we can now sow seeds at least a month earlier than we used. Trouble is the unpredictable British weather can take us by surprise and give us a sting in the tail and all our early plants can wither and die on us. I can only suggest that if you want to try and start plants off early, just do a small percentage and then sow more 2 or 3 weeks later. In fact it doesn't hurt to stagger all our sowings to prolong the season.

We are lucky to live in an area where there are plenty of stables and farms that can normally provide you with some well rotted manure and it is not too late to get a good layer of mulch over your ground. Just remember not to put it right up to the stalks of any perennials or shrubs that are already up and growing.

So, what to do now...

- Prune back hard any Buddleias which will result in strong new shoots and better flowers.
- Pot up your dry Dahlia tubers in the greenhouse to start them off before planting out later.
- It's not too late to get some early planting of Sweet Peas for an early crop.
- If you buy your plants as plugs, don't put them in ground but grow on in the greenhouse or a cool windowsill to ensure they are healthy and strong before planting out.
- Don't over water your seedlings or young plants. Slightly warm water is better than cold.

### **Volunteers Always Required For the Tiptoe Green**

**Contact Stephanie Nash on 01590 682383**

[stephynash@uwvlub.net](mailto:stephynash@uwvlub.net)



## “Time To Nest” 2021 Campaign Results

The results of Forestry England’s “Time to Nest” campaign to help ground nesting birds were received too late for the Winter edition of Tiptoe News, but we are pleased to be able to share the reflections of some of the New Forest Rangers on how these rare and endangered birds fared in 2021.

Across the UK the number of breeding curlew has declined by half over the last 25 years. A loss of habitat, increased disturbance and ongoing predations of the birds has contributed to this with over 70% of nests observed in Europe failing to hatch a single chick and, of those that do hatch, only 50% make it to fledging.



Here in the New Forest, we have one of the most significant lowland breeding sites for ground nesting birds. The birds are attracted by the area’s unique mix of habitats. Key species found here include lapwing, curlew, snipe, and redshank who favour the heathland and wetland areas, and those such as woodlark and wood warblers who nest on the ground in and around the edges of woodlands.

Ranger Hannah Everett said: “This year has been a busy year attending the many sites of ground nesting birds and helping to inform visitors of the importance of these special and unique birds. I am one of three New Forest National Parks Authority seasonal rangers of which two are funded through the NPA habitat mitigation fund, and one through much-appreciated contributions from New Forest Dog Owners Group and Camping in the Forest. Both support the need to educate people out enjoying the sensitive areas of the National Park and how to do so responsibly.” Staff from FE and NFNPA carried out

specific patrols close to breeding sites to advise the public and help monitor the birds. Many of them reported a much wider awareness of the birds amongst the public this year.

Lee Knight, New Forest Keeper said: “I spent a lot of time talking with the public at key nesting sites and many of those I spoke with were keen to do what they could to help these special creatures. We are very grateful for that support. Reducing disturbance is a key way we can all make a difference to their survival.

Elli Rivers, who took this photograph of curlew and chicks and is Principal Researcher leading the study, said: “The New Forest is such an important place for wildlife in the UK. We can be proud of the fact that it is the most significant lowland site for curlews in the whole country. If we lose them here, the rate of contraction across the south will accelerate and they could, in just a few years, be totally eradicated. Put simply, supporting these birds here in the New Forest is critical to their survival in lowland England.”



Austin Weldon, the New Forest Keeper whose wrote the update for our Autumn newsletter reflected “Supporting these birds involves a rollercoaster of emotions! It’s always uplifting to see them return to the Forest in the spring. From then on, we are on tenterhooks as they navigate so many different challenges. I followed many families of birds this year and the feeling when some of the chicks made it all the way to fledging, and I saw them airborne, was incredibly special.”

Although numbers of the birds overall remain critically low, the team have identified some positive signs of progress in the areas they studied, particularly with curlews. In response to the research team’s observations of extremely high levels of nest predation in the early spring, management was introduced in specific areas surrounding curlew nesting territories. Subsequently many nests in these areas successfully hatched and saw almost three times the number of chicks fledged this year compared to 2020. The team also identified an increase in the average size of broods this year with some pairs fledging two or three chicks compared with more commonly just a single chick last year.

Another key observation from this year was how the breeding season is extending. Traditionally ground nesting birds are expected to breed between March until late July. This year the team saw clear evidence that this period has extended with many nesting much earlier than in previous years and chicks still on the ground and being cared for by parents well into August.

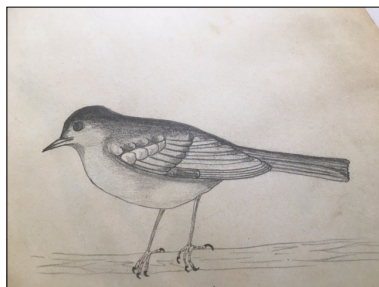
Whilst the PhD research focuses primarily on curlews, they also observed a range of other ground nesting birds during the season and saw some fledging success amongst other species including lapwings and nightjar.

Despite these positive developments, the overall numbers of ground nesting birds successfully breeding remains perilously low. To ensure a future for these extremely rare birds, it is essential that we continue to support them and better understand how to reduce the risks they face over the coming years.

To help with this essential support, eight New Forest car parks close to the most sensitive nesting locations were closed during the campaign and greater amounts of signage were put in place to encourage people not only to avoid these areas, but also to keep their dogs with them on the main tracks. Forestry England have asked us to pass on their thanks to everyone who supported last year’s ground nesting bird campaign by making small changes to their usual routes around the Forest to help minimise disturbance in the areas in which these endangered species were hatching and raising their chicks.

RM

## Art Competition



In Memory of Leo Maitland, late of the village of Tiptoe, to celebrate her love of British birds and The New Forest.

← Sketched by Leo aged 14 years →

Certificates will be awarded for first, second and third places as well as vouchers to spend on artists' materials.



### Competition Details

There are two classes, only open to children who live in Tiptoe, have family living in Tiptoe, or attend Tiptoe School.

\* 11 years and under

\* 12 to 16 years on 14th May 2022

The piece of work should depict **"Your Living Forest"**

To be created on A4 paper in any medium.

Artist's name, age and Tiptoe address should be on the reverse.

Must be submitted by 7th May 2022.

To: Pat Rendell, Robin's Joy, Wootton Rd, Tiptoe, SO41 6FT

Enquiries to Pat - 01590 682741 or patrend46@btinternet.com

The final ten entries will be displayed at the Tiptoe May Fayre on Saturday 14th May 2022.

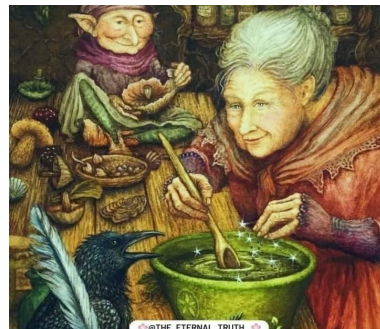
## Robin's Corner - Spring



It is the first day of March:  
Each minute sweeter than before.  
The redbreast sings from the tall larch  
That stands beside our door.

There is a blessing in the air,  
Which seems a sense of joy to yield  
To the bare trees, and mountains bare,  
And grass in the green field.

William Wordsworth,  
'To My Sister', 1798



The emotional energy you carry when preparing a meal transfers directly into the food. This is why it is very important to never make a meal when you are in a bad mood. This energy transfer can either heal you or slowly poison you. Choose wisely.

## Neighbourhood Watch

Tiptoe has been without a Neighbourhood Watch now for nine years since Bliss and Paul resigned due to health reasons. At the time we made extensive enquiries to try and find new representatives for Tiptoe but sadly without any success.

The question has again been by one of our new residents so I said I would ask once more to see if there is anyone out there who would be able to take on this very important role for the village. Some years ago it was said that nothing happened in Tiptoe but regrettably this has changed over recent years and we are beginning to hear about break-ins etc.

If you are interested in becoming a Volunteer Co-ordinator please go to Google 'Neighbourhood Watch' and there you will find out more about the role.



Brinkley, Middle Road, Tiptoe, Lymington, SO41 6FX.

Tel: (01590) 681174 Fax: (01590) 681118

E-mail: davisaccountants@btinternet.com

Jon Dowdeswell MAAT  
Here to deal with all your accounting requirements!

ACCOUNTS PREPARATION

~ ~ ~ ~ ~

COMPLETION AND SUBMISSION OF  
SELF ASSESSMENT TAX RETURNS

~ ~ ~ ~ ~

PREPARATION OF VAT RETURNS

~ ~ ~ ~ ~



## Brockenhurst Young Farmers

Brockenhurst Young Farmers have had another great start to their membership year which runs from September to September. December saw two successful fundraiser events. The first held on Sunday 12th December - our annual Christmas Coffee Morning. We raised a total of £274.50 with the money going towards our hall revamp. It was great to see the hall thriving again with the local community after the past 2 years.

Just before Christmas we participated in the shoebox appeal for the rescue dogs at Dogs Trust. We sent off 15 shoeboxes filled with dog treats, toys and blankets so they had something to open on Christmas Day.

The second fundraiser was the New Years Eve Tractor & 4x4 Run. It was great to see so many families out on our 26-mile route and thank you to everyone who came and waved us by along Wootton Road. It certainly made our 2021 go out with a bang.



We chose Farm Safety Foundation, aka "Yellow Wellies", as our charity for this event. This charity works closely with young farmers, HSE, and a range of farming organisations to help raise awareness and support towards farming safely and their physical and mental health. We had a total of 113 vehicles take part raising £1680.76 for Yellow Wellies.

To kick-start January, we hosted the Hampshire Junior Public Speaking competition - 30 juniors from around the county compete to qualify for their Area. Each junior started the day with speaking about their chosen subject for 2 minutes. We heard about Robotic Tractors, Beating, the change of law on using red diesel on tractors, horse riding disciplines and many more. After lunch it was straight back into the reading competition. They read a chapter of a Road Dahl book. We had 6 juniors qualify and will be heading for Kent showground in March to compete at area level in the hope they secure a place for the next round at National level.

Our wonderful Chairwoman, Samantha Gates, has also qualified for this area to compete in Member of the Year.



Brockenhurst YFC are also busy planning their next fundraiser, YFC Film Night. This will be at our hall on Saturday 16th April 2021, time to be confirmed. The film being premiered is all about our previous Hampshire County President, Michael Bailey, aka Speedy, who is a Denmead farmer. A year in the life of Speedy and following him and his family and members of Hampshire Young Farmers.

We are keen to hear from anyone who would be willing to sponsor this event and/or donate the use of a projector and screen for the evening. The trailer can be found on YouTube by searching "Michael Bailey Denmead Farmer". The film is produced by MV Films.

Posters will be out shortly with information, or please contact Hannah on 07548 635814 or [events.brockyfc@hotmail.com](mailto:events.brockyfc@hotmail.com)

Dates for the diaries:

Easter Bingo – Saturday 9th April

Film Night "A year in the life of Michael Bailey" – Saturday 16th April

If you're aged between 10 and 28 years old and want to get involved, please get into contact on either of our social medias or email [brock.hantsyfc@gmail.com](mailto:brock.hantsyfc@gmail.com)



# G FARWELL LTD





## SKIP HIRE, AGGREGATES, HAULAGE,

## GROUNDWORKS, FENCING AND TIMBER





Tower View, Crabbswood Lane, Sway SO41 6EQ 01590 682527 [info@farwells.co.uk](mailto:info@farwells.co.uk) [www.gfarwell.co.uk](http://www.gfarwell.co.uk)

Buy Local and 'Buy with Confidence' Hampshire Co Council Scheme Member





## Hordle Parish Council

Council Offices, The Pavilion, Vaggs Lane,  
Hordle, Lymington, Hampshire. SO41 0FP

Tel: 01425 611119

Email: [clerk@hordleparishcouncil.gov.uk](mailto:clerk@hordleparishcouncil.gov.uk)

Web: [hordleparishcouncil.gov.uk](http://hordleparishcouncil.gov.uk)

Clerk: Sarah Pitt Deputy Clerk: Chris Halling

## Parish Council Update – Winter/ Spring 2022

### Nominations for Parish Heroes Award

The Parish Council is keen to recognise the efforts of people and groups who have gone the extra mile over the past 2 years for our community. If you would like to nominate someone email the details to: [clerk@hordleparishcouncil.gov.uk](mailto:clerk@hordleparishcouncil.gov.uk) or return the reply slip at the bottom of the page to the Parish Office by 4th April. Awards will be presented at the Annual Parish Assembly on 3rd May.



### Speed Indicator Device Update

The new Speed Indicator Device (aka VASLR), has been hard at work at 2 locations in Hordle recently. At Ashley Lane, it captured 82,000 vehicles travelling in both directions. 93% of incoming vehicles were travelling at under 30mph (99% were under 35 mph). The highest speed recorded here was 55mph. Over Christmas, the VASLR was in action on Stopples Lane, where it recorded 24,000 vehicles. Again, the vast majority (93%) were travelling under 30mph (99% under 35mph). The highest speed recorded here was 49mph. Over the coming weeks the VASLR will be moving to Everton Road, Hordle and the A337 in Everton. We are still waiting to hear from County when the new locations in Tiptoe will be available – we will keep you posted.

### Bargate Housing Development

Bargate Homes has submitted its planning application for 103 houses and public amenity space on Strategic Site 9 - land east of Everton Road, Hordle. The application reference number is 21/11731. The deadline for public comments will have passed by the time of publication but we will let you know the outcome of the application in the next edition.



### Tree Planting in the Parish

The Parish Council has planted lots of trees over the past few months – in the Community Orchard, Golden Hill triangle, Dudley Avenue and Shepherd's Way in Everton. If you know of a spot where you think a new tree or two could find its home in Tiptoe, then contact the Parish Office.

### Next Meetings

Tuesday 15th March, 19th April. Parish Assembly 3rd May.

All meetings are in Hordle Pavilion, Vaggs Lane, at 7.15pm. Agendas available from the website in advance.

### Parish Heroes Award 2022. I would like to nominate:

Name:.....

Reason:.....

.....

.....

.....

My Name.....Phone/ Email: .....

**Please return this form to the Parish Office, Pavilion, Vaggs Lane, Hordle by 4th April 2022.**

Narey's

Farming Services & Paddock Maintenance

07811 573811





## May Fayre – Saturday 14<sup>th</sup> May

Our May Fayre is approaching rapidly – it would be lovely to see as many of you as we did in September when we ran our last Fayre. We have now gone back to our regular date of the second Saturday in May – Covid allowing!

Do any of you have a stall that goes out to shows and maybe would like to bring it along? We do not charge for a pitch but ask that you donate something towards the upkeep of Tiptoe Green at the end of the show.

This show was started on the 29<sup>th</sup> April 2011. (Do you recognise the date?) Yes, it was the Royal Wedding Day of His Royal Highness Prince William and Kate. Instead of a Street Party in Tiptoe we called the Fayre our 'Street on the Green'. Last year would have been the 10<sup>th</sup> anniversary of the show but then there was Covid!

Looking forward to seeing you there. Pat Rendell



### News from Tiptoe Green - Work Parties



What are your plans for Saturday 12th March?

How about coming and helping with the maintenance of your own very special Tiptoe Green?

We are holding a Work Party to help spread some new gravel on the dips in the path and cutting back some shrubs and hopefully clearing some brambles.

We start at 10 am and usually finish 12 – 12.30. Refreshments are provided half-way through.

If you are able to come and help please email [stephynash@uwclub.net](mailto:stephynash@uwclub.net) so we know how many people to expect.

If anyone has clippers, loppers, strimmers, wheelbarrows they are very welcome.

Thank you, The Tiptoe Green Trustees



DANESTREAM  
FARM SHOP

### Danestream Farm Shop

Sway Road, New Milton, BH25 5QU  
Tel: 01425 618885 Email: [sales@danestreamfarmshop.co.uk](mailto:sales@danestreamfarmshop.co.uk)

For all New Forest Produce. (Delivery Service Available)

Local preserves, chutneys & sauces  
Local and free range meat & poultry  
Seasonal game supplied by local shoots

Home made sausages made by our own butchers  
Seasonal fruit & vegetables fresh daily  
Fresh baked bread, rolls, & morning goods

Sandwiches & Rolls, Hot Pies & Pasties

Opening times: Monday - 8.30 - 5.00

Saturday - 8.30 - 4.30

Sunday - 9.00 - 1.00



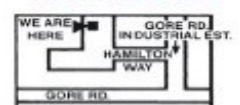
DANESTREAM  
FARM SHOP

## New Milton Motor Services Ltd



- MOTS-DIESEL & PETROL
- SERVICING & REPAIRS TO MOST MAKES & MODELS
- TYRES, WHEEL ALIGNMENT & BALANCING
- BRAKES, CLUTCHES & EXHAUSTS
- MOT WELDING
- VEHICLE DIAGNOSTICS/ CODE READING

Est Over  
20 Years



Free Local  
Collection & Delivery

**BUDGET FIXED PRICE SERVICING**

**01425 621444**

Hamilton Way, Gore Rd Ind Est, New Milton, Hants BH25 6TQ



## Hordle WI

meets 1st Tuesday each month in the WI Hall  
2pm-4pm (doors open 1.30pm)

Members can join a Craft Group,  
Book Club and Walking Group

### Speakers

1st March - Steve Hara

"Cunard History and Glamorous Stars"

5th April - Maria Ragan "St Barbe Museum",

3rd May - Annual Meeting

7th June - Queen's Platinum Jubilee  
Celebration Cream Tea

New Members and Visitors welcome  
Contact Lesley 01425 627942

Tabletop Craft Sale in Hordle WI Hall Sunday  
20th March 11am-3pm  
Free entry, refreshments available

If Christmas is hard,  
If you've lost someone dear,  
Just look in your heart  
And you'll know they're still here.  
The star in the sky,  
The light falling snow,  
The robin outside,  
It seems like they know.  
If this is a time,  
When you're struggling through,  
Just do what you can,  
For what matters is you.  
There's no need to be merry.  
There's no need to bright.  
Just do what you can,  
It will be alright.

xx



## Breathing in Springtime, 2022 - Good for Body, Soul and Spirit. River of Life Assemblies of God church, at the Life Centre, Wootton Road, Tiptoe.

We are quickly tipping into one of the prettiest times in Tiptoe when tulips appear near the main road sign and in the Village Green and parts of Wootton Road edging the Green are lined with colourful daffodils (or narcissi). We have already needed to give our lawns a quick trim to stop them looking too field-like.

Recent lifting of restrictions enables our return to greater normality and we are praying that fears and anxieties that have gripped so many folk will soon be overcome. Hordle has welcomed a new vicar, Phillip Mullins, and his wife and family and it was a joy to share with the congregation in that very affirming induction service. We look forward to getting to know them soon.

At the Life Centre we have reserved the first weekend in June for special celebrations marking the Queen's Platinum Jubilee. That weekend also happens to be 20 years since Joy and Tony took up primary leadership of the River of Life church when it was in Lymington, so a double celebration, overshadowed by the greater priority of course! Ideas are flowing for events and celebrations around that time. Why not contribute your ideas too and link up with local people, make new friends, enjoy one another? It will be great to make more connections!

River of Life (ROL) is of course meeting on Sundays. When you feel a nudge to join in for a time of worship and Bible teaching, we meet at 10.30 am on Sundays. We try to keep reasonably spaced in the church for everyone's comfort and also have an overflow with a screen in the light and airy adjacent hall. There is no need to book!

We also host a number of different groups and events at the Centre to suit wherever you might be on your faith journey, including planned breakfasts and well-being walks and craft style Fab Fridays. Also: The Alpha course. Alpha, a free 11 week series successfully exploring the Christian faith and it runs all around the globe. Last year Alpha happened in 120 countries and was enjoyed by one and a half million participants. This is an hour a week and a great place to ask questions and share your point of view. We have even hosted this online from little ol' Tiptoe! To discover more look up [www.alpha.org](http://www.alpha.org) or sample the local course through [joybbingham@btinternet.com](mailto:joybbingham@btinternet.com). Other courses accessible from time to time from Tiptoe are The Bible course, the Discovery Bible course, the Blessing course, Freedom in Christ and the Well-being course (8 weeks), all successful in small, face to face groups and on line.

The Life Centre hall and grounds are easily booked for a one off event, regular groups, or family parties. Terms of hire can be requested from the number below.

Prayer requests can be popped into our letter box on the gate (anonymous if you prefer) if you'd like us to join with you in prayer support or if a pastoral visit would be helpful. We have already made lasting friendships this way. There are many great neighbourly things happening in Tiptoe and please be encouraged to tell us if we can help lift some pressure or support you! May God fill each Tiptoe family, and people living on their own, with hope, encouragement and joy as we step into the Spring and Summer season!

Joy and Tony Bingham, River of Life church Tiptoe, at The Life Centre, Wootton Road.  
[www.riveroflifefirstnewforest.org](http://www.riveroflifefirstnewforest.org) tel:-01590 682638

**To book the Congo bus, call 07891 658769**

**Volunteers Always Required for the Tiptoe Green**  
**Contact Stephanie Nash on 01590 682383 or [stephynash@uwclub.net](mailto:stephynash@uwclub.net)**



## Tiptoe School Report Spring 2022

Most of us take being able to read for granted. We are privileged in school to help start this journey for our children and at Tiptoe we simply LOVE reading! March is the anniversary of world book day (Thurs 3rd March this year) and this year we have decided to celebrate our love by having a week of reading activities - there are opportunities for the children to dress as their favourite Harry Potter character, to join in with a book swap and enter an Extreme Reading competition. We are also going to be hosting the Masked Reader where staff will be disguised by masks and videoed reading part of their favourite stories with the children having to guess who the member of staff is!

But that is just one week – what else do we also do to encourage the children to develop a love of reading and why is it so fundamental? Reading is so important to every aspect of life and is the gateway to successfully accessing the whole curriculum.

To ensure reading has a high profile at Tiptoe, we have nationally recognised phonics scheme which used right the way through the school.

- Monster Phonics is our foundation stone of teaching the children how to read. It is used to teach the children the different sounds which will enable them ultimately to be able to read independently. The children love the monsters who represent each sound such as Angry Red A who represents the “a” sounds e.g. “ai” “ay” and “ea” etc. The children learn and practise the sounds in daily phonics sessions.
- We have a scheme of reading books to take home weekly which support the phonics being learned. The texts provided for the children to read are linked to the specific sounds being covered.

In addition to phonics teaching we also have:-

- Whole class or cohort guided reading sessions using high quality, exciting texts which progress through each year. Guided reading is when the class share texts together, identifying themes, exploring characters and learning about inference and deduction. Follow up work is completed and then recorded in class or individual reading journals.
- Daily story sessions. Each class is read to aloud after lunch. This is a time to sit back, relax and listen to specially chosen texts to stimulate and engage the children, helping them develop their love of books.
- Weekly opportunities for the children to read independently in school.
- Tiptoe reading challenge. We want the children to read at home as often as possible – at least four times a week and we expect the Reading Challenge book to be in school daily so adults in class can check progress. This rewards those children who are successful at the end of each term with a reading challenge badge.
- We are very fortunate to have an army of volunteer readers who regularly come in to hear the children read. This is such a hugely valuable resource; the more children can read 1:1, the more fluent they will become.
- At Tiptoe we are very lucky to have a beautiful library of our own for the children to borrow books from. We also offer the children the opportunity to spend one lunchtime per week sharing and enjoying books with their friends in the library.

Another element of reading that the children love is when we are fortunate enough to have an author visit. Recently we were fortunate to have a visit from Paul Linnet, co author of the best selling “Supertato” series. The children had a fantastic time listening to his stories and finding out about how stories are written. Who knows hopefully some will be inspired to become authors themselves and, if not, will continue to develop their love of reading and spread the love to others!

Happy reading!



### **Barkingham Palace** **Professional Dog Groomer**

*“From luxury dog grooming to a short bark and sides”*  
All dogs and styles catered for

**Appointments please contact**

**Bev on 01425 618842 or Mobile 07738214163**

Email: - [barkinghampalacegrooming@gmail.com](mailto:barkinghampalacegrooming@gmail.com)

Website: - [barkinghampalacegrooming.co.uk](http://barkinghampalacegrooming.co.uk)

Based in Wootton

*“10% off on a full groom with this advert”*



## SMALL ACTIONS ~ BIG IMPACT

And we're off! GREENING SWAY is underway. Challenge cards have been delivered by 39 Sway volunteers to 1700 or so households across Sway. Doing the Challenges which we have set ourselves is already beginning to make a difference to the CO2 emissions we produce.

Thank you to everyone who voted for the challenges, who delivered cards and who has worked hard to get the campaign off the ground.

We have another favour to ask. Are you, your children or community group ready to get creative?

Can you think of a way to creatively represent one of the challenges you are doing? Or perhaps a challenge not on the Greening Sway card but something you are already doing to reduce your carbon output?

Displays in your gardens & in the village centre will remind us all to make a real effort over these next two months. Just contact us at [ecoswaynf@gmail.com](mailto:ecoswaynf@gmail.com) and we will advise where you can site your display in the parish council run green parts of the village, like Stanford Rise Green & Youth Centre Green.

At the Jubilee Oak we have an ECO SWAY Wildlife trail. You will sight banners and other signs promoting Greening Sway around our village.

Please put the Greening Sway logo in your front window or tie something green to your front gate to indicate that you are doing the challenges. These are what our volunteers will look for when they come around again to count the first few days of April. This is important information which will enable us to feed back to you what Sway has saved in CO2e and in money.

Thanks to:

Councillor Barry Rickman, whose donations have enabled us to post to the outer-lying households and thereby to cover the whole village.

Our thanks too for the inspired idea from Iris and Ted Watts of a mini ECO FILM FESTIVAL – to coincide with Greening Sway at SWAY CINEMA.



| SWAY WI PROGRAMME    | 2022            |                                                                                                                                                                               |
|----------------------|-----------------|-------------------------------------------------------------------------------------------------------------------------------------------------------------------------------|
| Date                 | Time            | Speaker/Activity                                                                                                                                                              |
| Thursday 13 January  | 7:15 for 7:30pm | January Revue: Murder Mystery (from your committee)                                                                                                                           |
| Thursday 10 February | 7:15 for 7:30pm | Down Memory Lane with Gwen – 60 years in the WI                                                                                                                               |
| Thursday 10 March    | 7:15 for 7:30pm | Manuela Zucchi – returns to tell us about more Famous Italian Women                                                                                                           |
| Thursday 14 April    | 7:15 for 7:30pm | 'How Honey Gets in the Jar' Bee-Keeping Specialist                                                                                                                            |
| Thursday 12 May      | 7:15 for 7:30pm | ANNUAL MEETING & Marlings Vineyard                                                                                                                                            |
| Thursday 9 June      | 7:15 for 7:30pm | Talk by Mark Drury, SPUDWorks including detail about the Living Room (for Dementia sufferers)<br>Strawberries<br>Prepare our Float for the Sway Carnival Procession on 9 July |
| Thursday 14 July     | 7:15 for 7:30pm | Garden Party                                                                                                                                                                  |
| Thursday 11 August   | 10 till 12      | Coffee Morning                                                                                                                                                                |
| Thursday 8 September | 7:15 for 7:30pm | New Forest Ranger                                                                                                                                                             |
| Thursday 13 October  | 7:15 for 7:30pm | Home-spun Evening                                                                                                                                                             |
| Thursday 10 November | 7:15 for 7:30pm |                                                                                                                                                                               |
| Thursday 8 December  | 7:15 for 7:30pm | Christmas Party + Revue                                                                                                                                                       |

### Bashley Post Office and Village Store

**Shop offers,** News papers, Magazines, Groceries, Fresh bread & Cakes, Dry Cleaning Service  
We offer a home delivery service. Orders taken over the phone (before close) for next day delivery or by Email (before 6.30am) for same day delivery

**Post office services,** available include postage (up to 10kg), Parcelforce services  
free cash withdrawals from Barclays, Lloyds, Co-op, some Nationwide & Halifax accounts  
Moneygram transfers, Bureau de Change (Euros and US Dollars held on site)  
phone top-ups and bill payments.



Post Office: Mon to Fri 9am to 5.30pm – Sat – 9am to 12.30pm  
Shop: Mon to Sat – 6am to 7.30pm – Sun & B/H – 7am to 1pm  
Tel:- 01425 610040 Email:- [bashleyvillagestores@mail.com](mailto:bashleyvillagestores@mail.com)



## Contact a Parish Councillor in Tiptoe or Sway

Cllr. Pat Rendell

[patrend46@btinternet.com](mailto:patrend46@btinternet.com) or [pat.rendell@hordleparishcouncil.gov.uk](mailto:pat.rendell@hordleparishcouncil.gov.uk)

01590 682741 or 07518746690

Parish Offices [clerk@hordleparishcouncil.gov.uk](mailto:clerk@hordleparishcouncil.gov.uk) or 01425 611119

Hordle Parish Council Website:- <http://www.hordleparishcouncil.gov.uk>



Cllr. Stephen Tarling

[stephen@sway-parish-council.org.uk](mailto:stephen@sway-parish-council.org.uk)

01590 683707

Parish Office: [clerk@sway-pc.gov.uk](mailto:clerk@sway-pc.gov.uk) or 01590 718116

Sway Parish Council Website:- <http://sway-pc.gov.uk/>



Tiptoe News can be seen in colour on Hordle parish Website

## Useful Contacts

### Hampshire Constabulary

**Emergency:** 999

**Non-Emergency:** 111

[www.hampshire.police.uk](http://www.hampshire.police.uk)

### Crimestoppers

(Anonymous reporting)

0800 555 111

[www.crimestoppers-uk.org](http://www.crimestoppers-uk.org)

### Action Fraud

(Report and get advice about fraud or cyber crime)

0300 123 2040

Online [www.actionfraud.police.uk](http://www.actionfraud.police.uk)

### Blue Lamp Trust

(Bobby scheme)

0300 777 0157

### Citizens Advice (Advice line)

03444 111 444

Monday to Friday 9am to 5pm

### RSPCA

(24 hour Helpline to report cruelty, neglect or an animal in distress)

0300 1234 999

### Environment Agency Incident line

0800 80 70 60

### Hampshire Domestic Abuse Service

03300 165 112

### The Farming Community Network

(Suicidal feelings/or bereaved by suicide)

Helpline 03000 111 999

7am to 11pm

Email Helpline: [help@fcn.org.uk](mailto:help@fcn.org.uk)

### Victim Support

(Hampshire and IOW)

0808 178 1641

Monday to Saturday 8am to 8pm

Out of hours Supportline: 0808 168 9111

### Silver Line 24/7

0800 4 70 80 90

**Appletree Careline For peace of mind**  
**Contact 02380 285523**



### Cango bus

Cango Bus service can respond to your needs.

Call 07891 658769 to register.

Between 07.00 & 09.00 Monday to Friday.

Saturday journeys must be booked on Thursday or Friday

### Cost of Advertising in Tiptoe News

A single advert is £12 whilst the cost of a year is £40, per half page is £17 or £50 per year.

Pat and Cyril Rendell – Joint Editors  
[patrend46@btinternet.com](mailto:patrend46@btinternet.com)

## How to report a road problem

If you are concerned about a pothole, poor road or pavement surface, drain or other road problem, please report it in the first instance on this link, attaching up to 3 digital photos:

<https://www.hants.gov.uk/transport/roadmaintenance/roadproblems>

Or if it is very urgent ie. an immediate danger such as a fallen tree across a road, or you don't have access to the internet, call **0300 555 1388**

Most issues reported in the ways above will be dealt with in a reasonable timely manner, particularly those which are considered urgent or a danger.

If you still have concerns, let me know on **01425 614655, 07867502624** (call or Text)  
Or [fran.carpenter@hants.gov.uk](mailto:fran.carpenter@hants.gov.uk)

# Tiptoe News

Editors Pat and Cyril Rendell

Email: [patrend46@btinternet.com](mailto:patrend46@btinternet.com) or 01590 682741

## Tiptoe News needs YOU!

If you have a story, some news, a memory or photograph of Tiptoe, or a forthcoming event,  
**PLEASE** get in touch!!!!

Calling all **LOCAL BUSINESSES** and **CHARITIES!!!**

We deliver free to around 280 homes in the Tiptoe area. People like to support local business so why not demonstrate your commitment to the local community by contributing to this valuable community newsletter!

**Deadline for contributions and articles for the next issue is 15th May 2022**

See page 23 for advertising costs

## What's on

### Tiptoe Community Group Coffee Morning

Wootton Social Club  
Every Wednesday 10.30 to 11.30

### Hall Hire

#### St Andrews Church Hall

Contact Hordle parish office on 01425 626565  
**9.30am to 12.30pm week days**

#### The Life Centre

Contact Joy Bingham on 01590 682638

### St Andrews Church

10.00am Family Worship, 2nd & 4th Sunday  
10.00am Communion, 1st, 3rd & 5th Sunday

### River Of Life (Assemblies of God) Church

Sunday Worship service 11.00  
Everyone welcome

## Mondays to Fridays

### Butterflies

Pre-school - term time only 9:15 - 12:15  
St Andrews Church Hall - Louisa Parsons  
07708001150

## Wednesdays

Tiptoe Community Group Coffee Morning  
Wootton and Bashley Social Club  
10:30 – 11:30

Sway Cub Scouts

SCARF Youth Club

[admin@scarfnewforest.org](mailto:admin@scarfnewforest.org),

07874 221249

<http://www.scarfnewforest.org/membership.htm>.

Email is [admin@scarfnewforest.org](mailto:admin@scarfnewforest.org)

## Coming Events



One Foot in the Furrow  
Lunch on 10th March at 12 noon  
Young Farmers Club  
Wootton Road, Tiptoe



### Hordle Parish Council Meetings

Hordle Pavilion, Vaggs Lane, 7.15pm  
Tuesdays 15th March and 19th April.  
Parish Assembly 3rd May.



### TIPTOE MAY FAYRE

Saturday 14th May  
Noon - 4 pm on The Green  
(see pages 9 and 19 for more information)



The Queen's Platinum Jubilee  
Street Party in Middle Road  
Sunday 5th June



## The Year of the Tiger

If you would like to see the newsletter in colour, please contact us and we will send a pdf file. We hope you enjoyed this Newsletter. If you have any comments or would like any different articles or subjects inserted, please do not hesitate to contact us and give us your views.